

# Evidence for an ALS Survival Benefit with CNM-Au8 Treatment: Interim Results from the RESCUE-ALS Trial Long-Term Open Label Extension

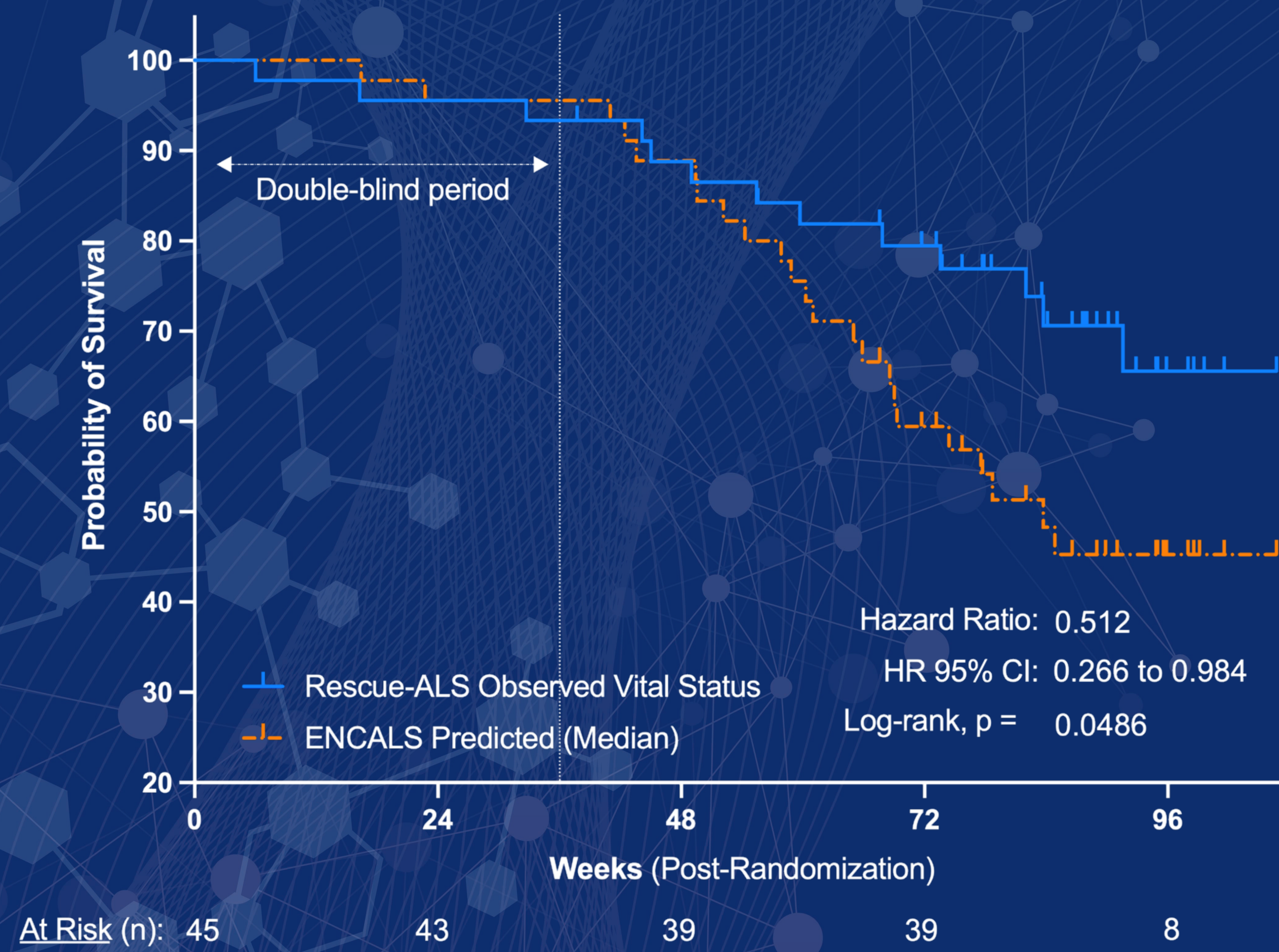


Steve Vucic PhD, DSc, FRACP, FAHMS<sup>1</sup>, Parvathi Menon PhD, FRACP<sup>1</sup>, William Huynh PhD, FRACP<sup>2</sup>, Colin Mahoney, PhD, MB, MRCPI<sup>2</sup>, Karen S. Ho, PhD MSc<sup>3</sup>, Austin Rynders, RN<sup>3</sup>, Jacob Evan<sup>3</sup>, Jeremy Evan, PA-C<sup>3</sup>, Robert Glanzman, MD FAAN<sup>3</sup>, Michael T. Hotchkin<sup>3</sup>, Matthew C. Kiernan PhD, DSc, MBBS, FRACP, FAHMS

<sup>1</sup>Concord Repatriation General Hospital, University of Sydney, Australia; <sup>2</sup>Brain and Mind Centre, University of Sydney, Australia; <sup>3</sup>Clene Nanomedicine, Salt Lake City, UT, USA

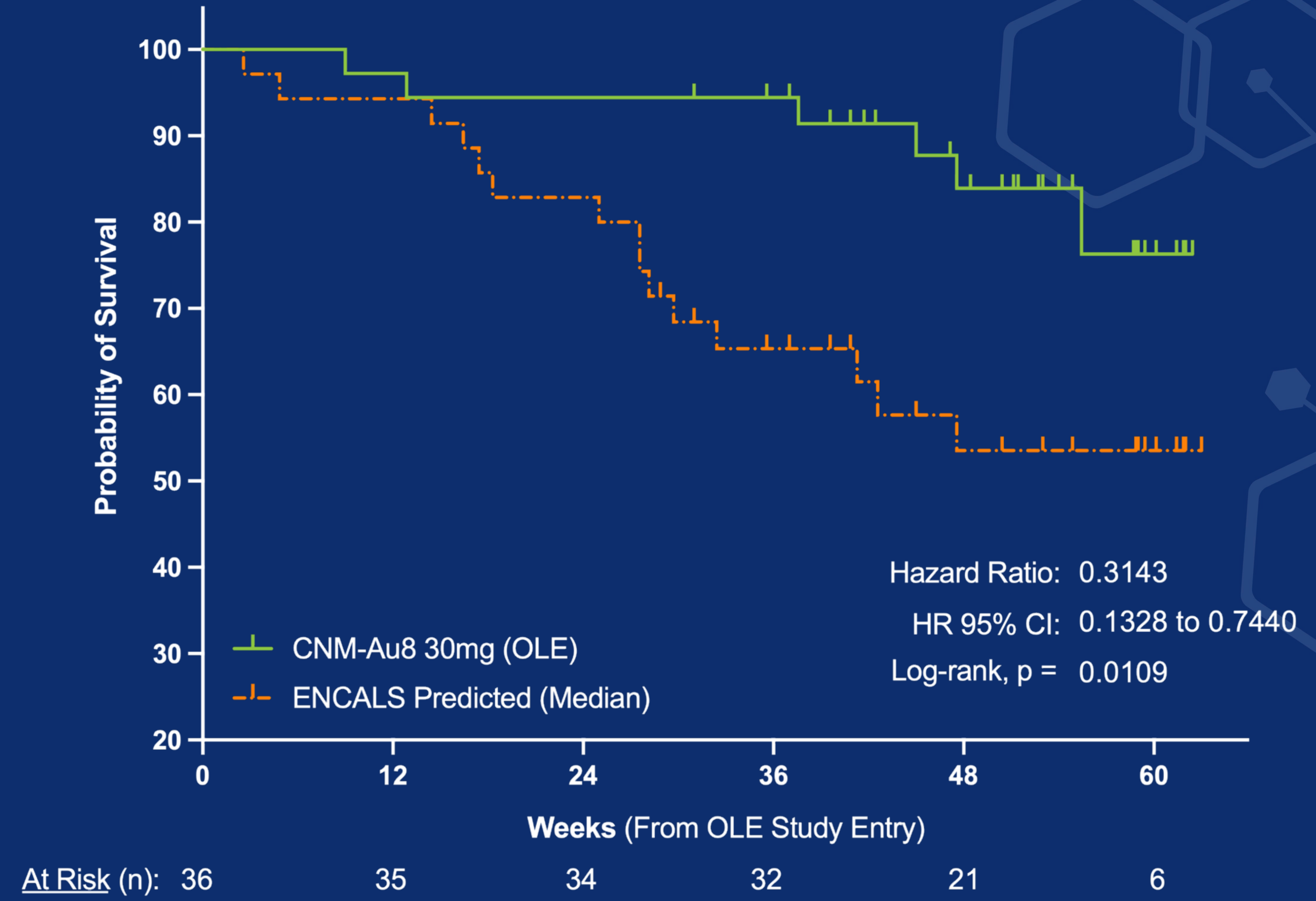
## All Randomized

RESCUE-ALS Long-Term Observed Survival (All Randomized) vs. ENCALS Predicted Median Survival  
ITT Population, All Subjects from Randomization (Active & Placebo)



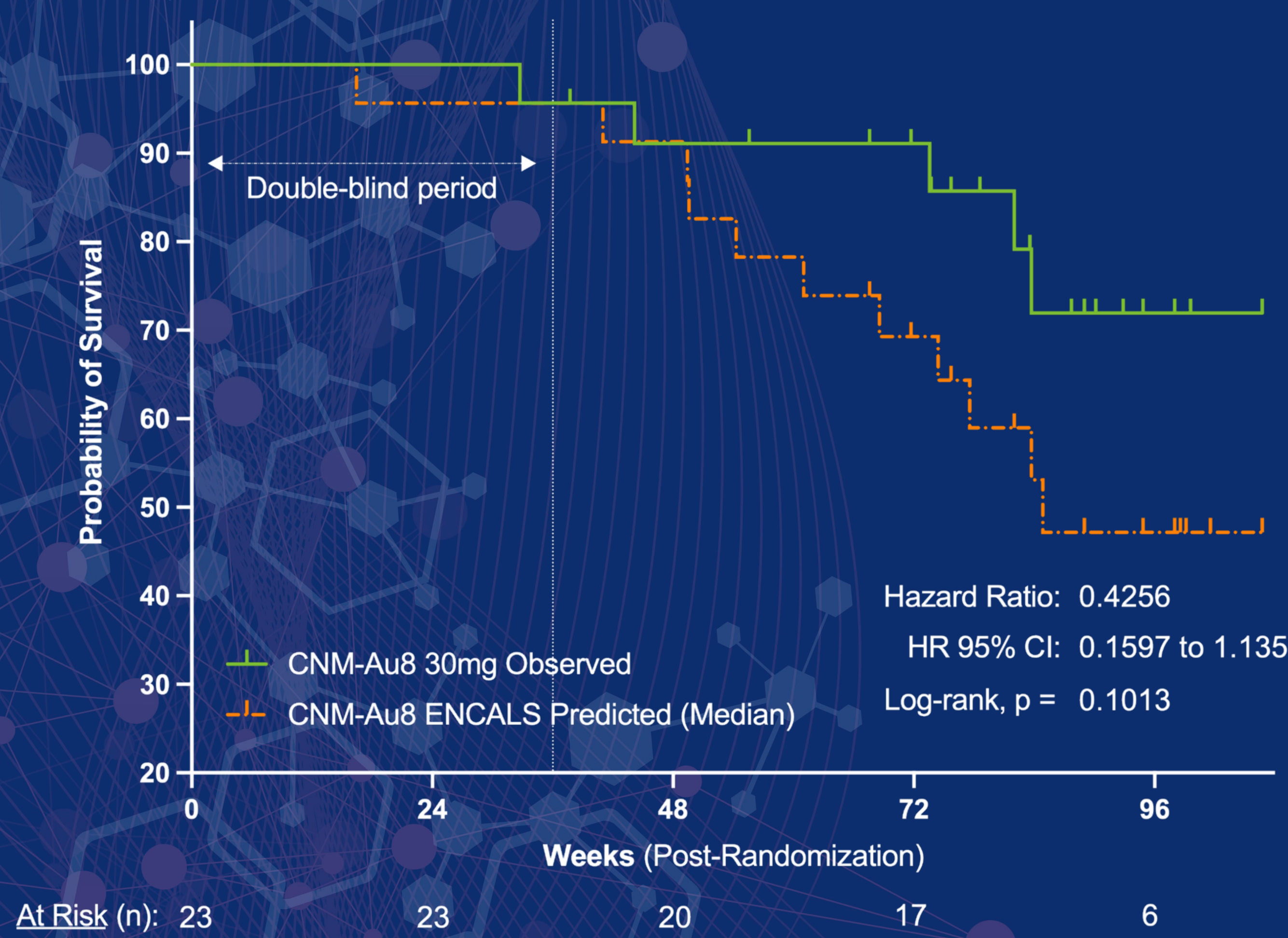
## All OLE Participants (CNM-Au8 Treated)

RESCUE-ALS Long-Term Observed Survival (OLE Participants) vs. ENCALS Predicted Median Survival  
All Open Label Extension Participants



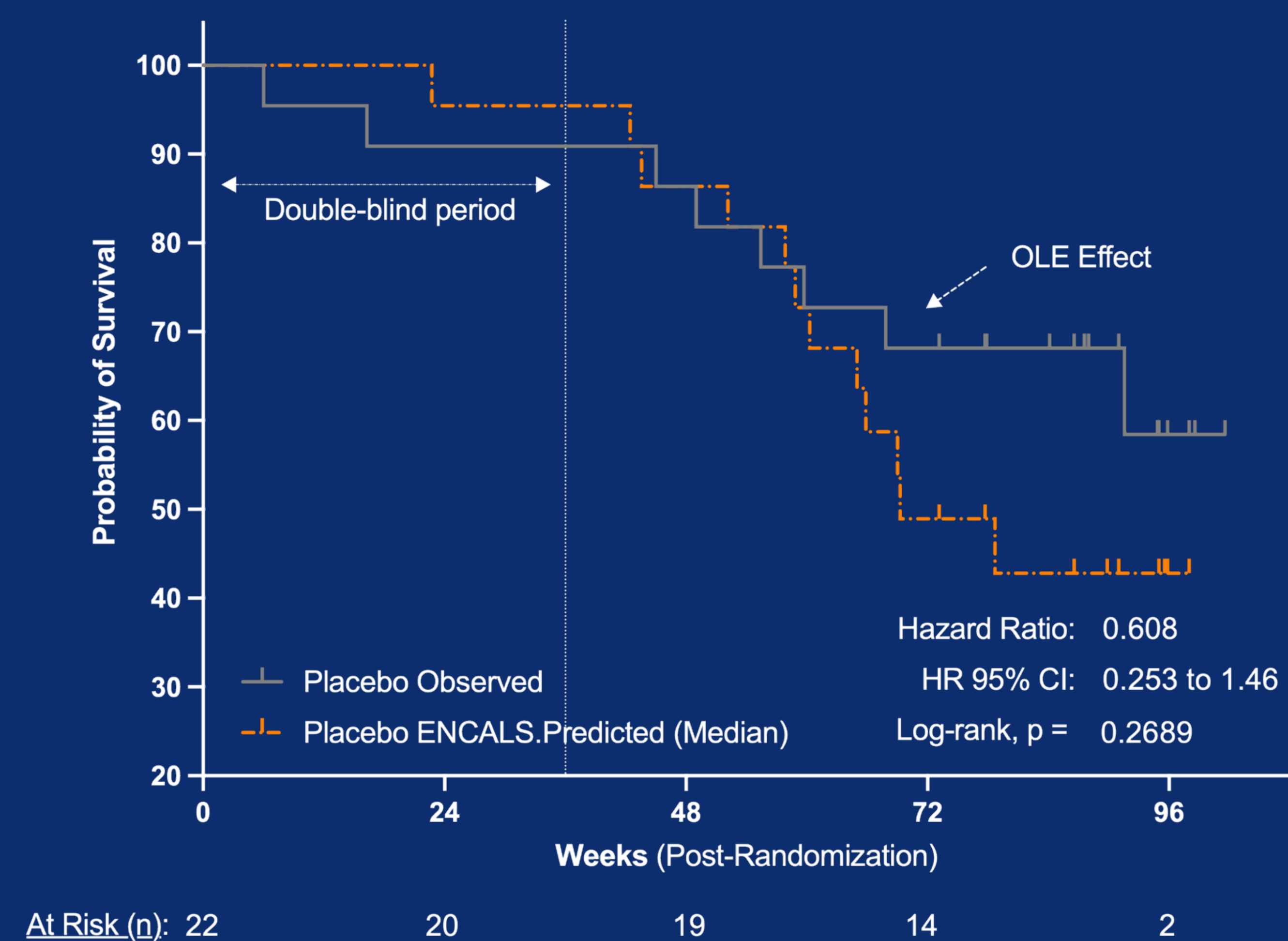
## All CNM-Au8 Randomized

RESCUE-ALS Original CNM-Au8 Randomized Long Term Observed Survival vs. ENCALS Predicted Median Survival  
All CNM-Au8 Treated Subjects, Survival from Randomization, ITT Population



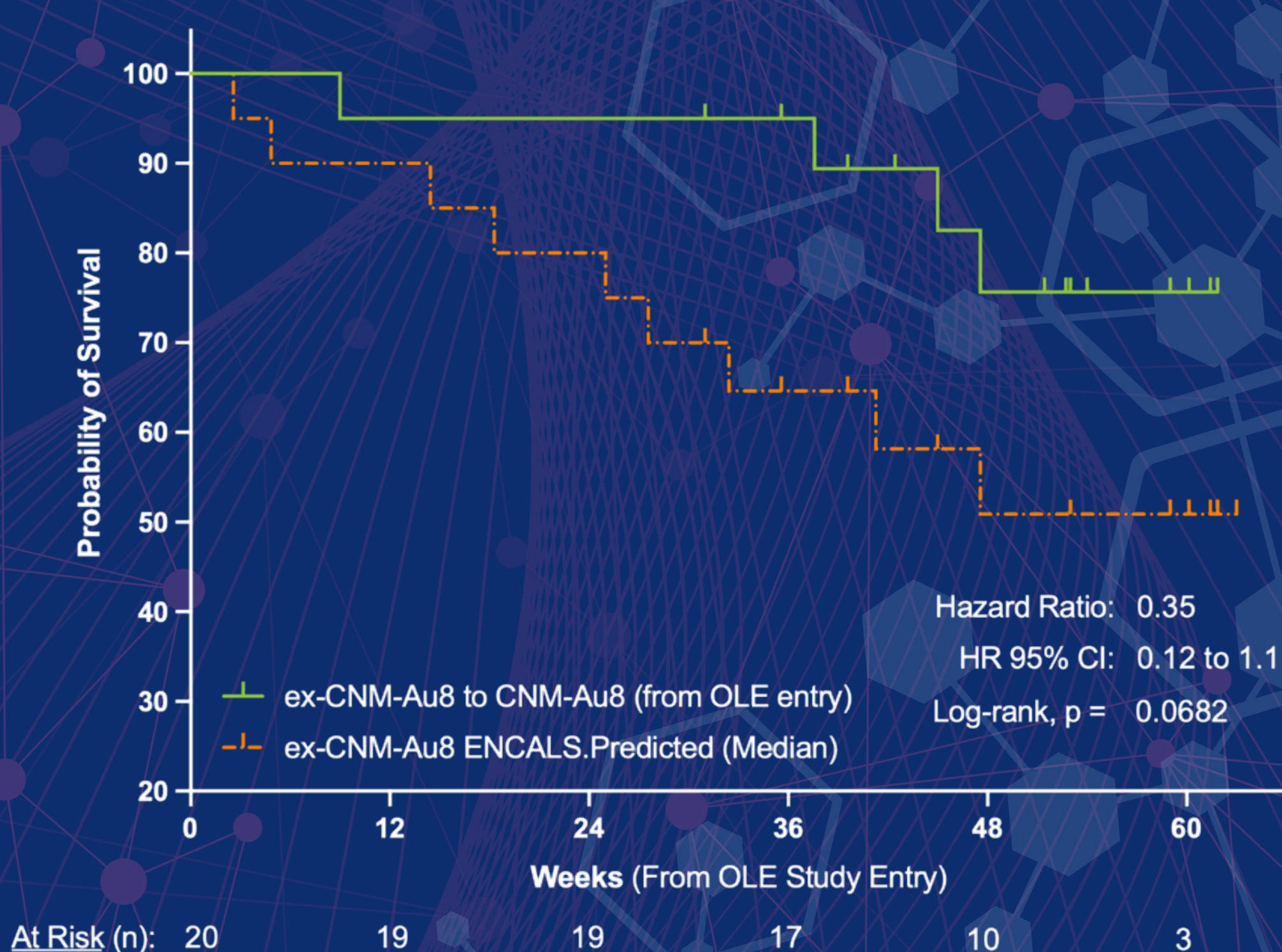
## All Placebo Randomized

RESCUE-ALS Original Placebo Randomized Long-Term Observed Survival vs. ENCALS Predicted Median Survival  
All Placebo Treated Subjects, Survival from Randomization, ITT Population



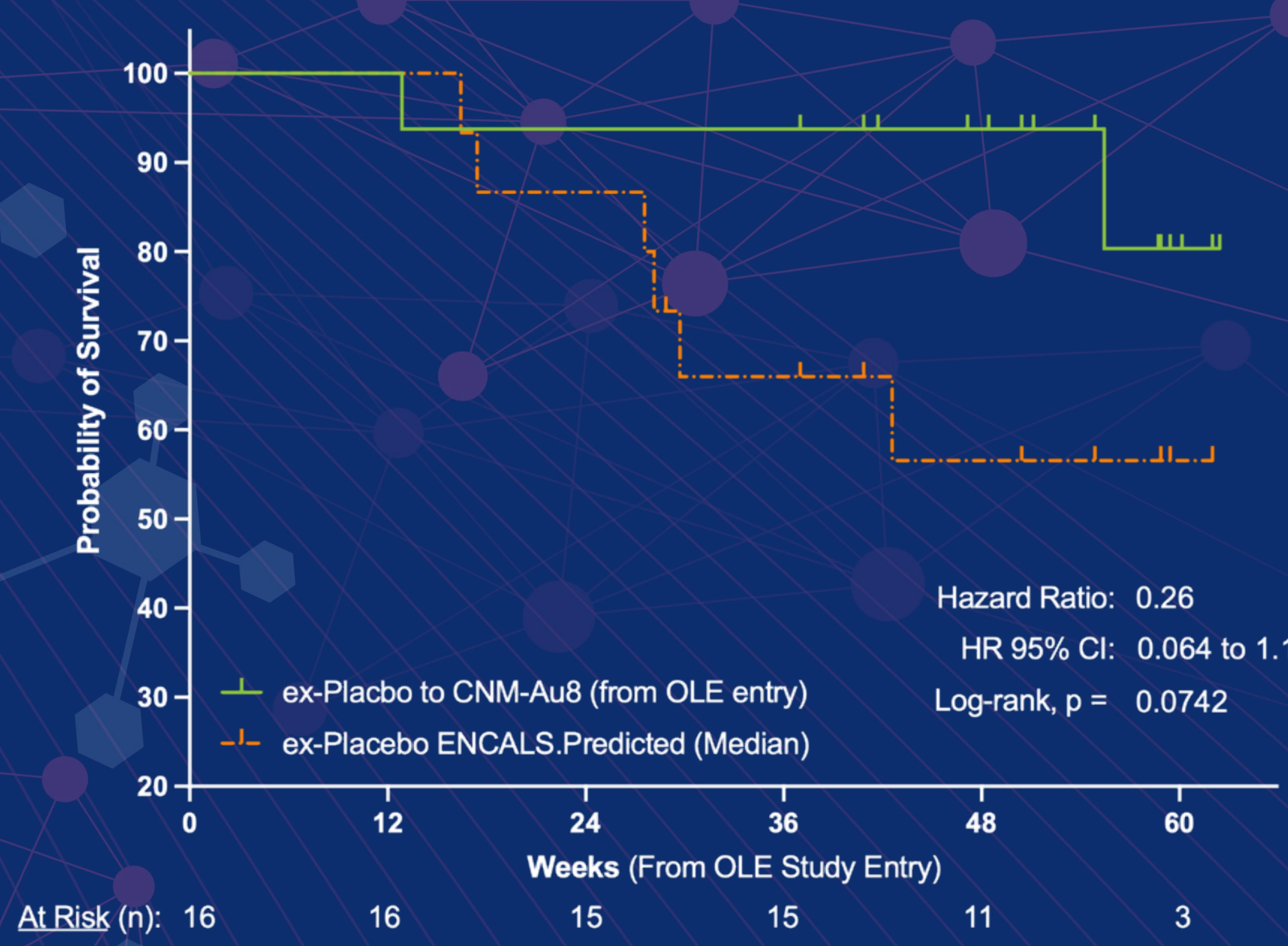
## CNM-Au8 OLE

RESCUE-ALS CNM-Au8 to CNM-Au8 OLE Long-Term Observed Survival vs. ENCALS Predicted Median Survival  
All CNM-Au8 Subjects Entering OLE, Survival from OLE Entry, ITT Population Subset



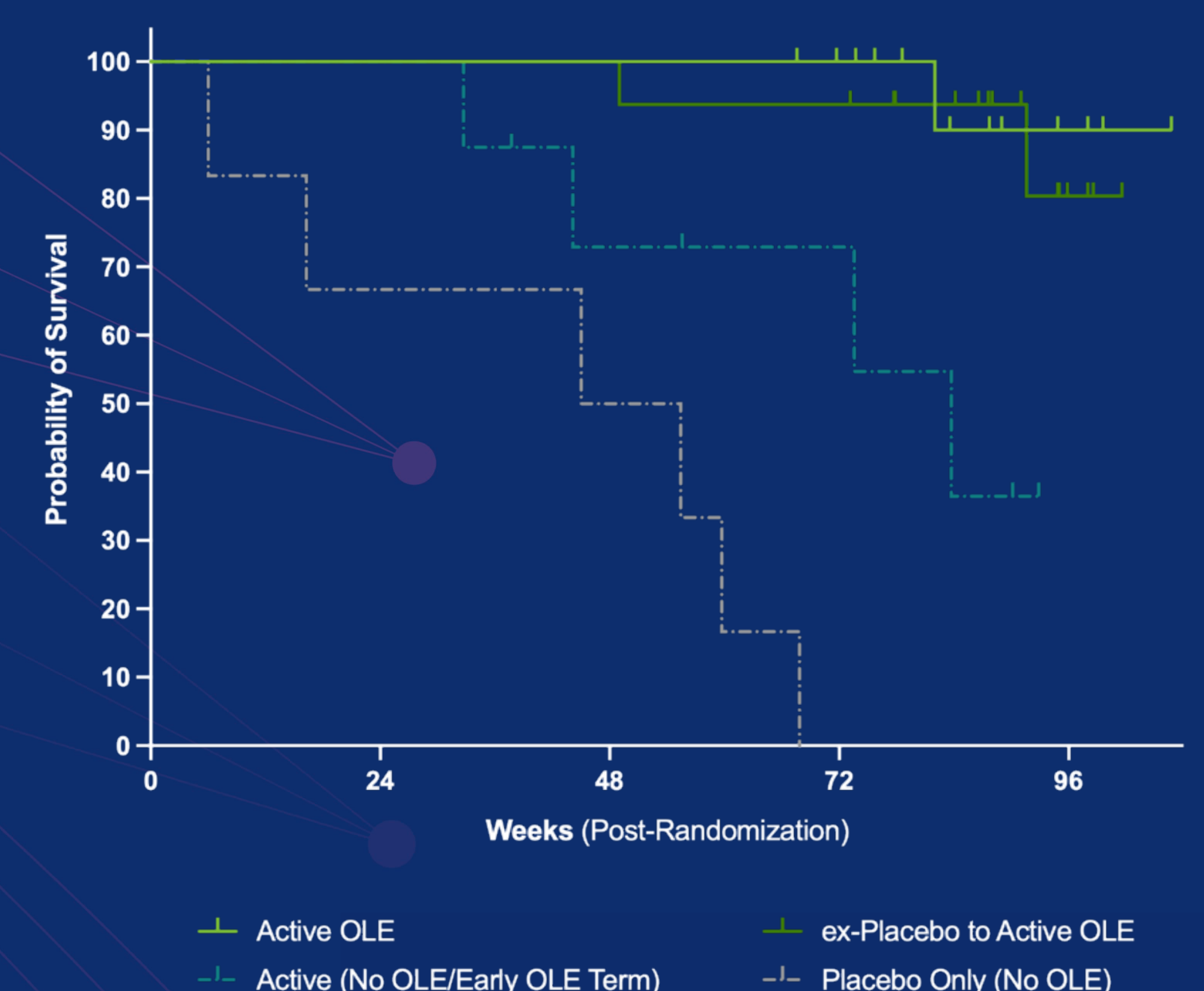
## ex-Placebo to CNM-Au8 OLE

RESCUE-ALS ex-Placebo (to CNM-Au8 OLE) Long-Term Observed Survival vs. ENCALS Predicted Median Survival  
All Placebo Subjects Entering OLE, Survival from OLE Entry, ITT Population Subset



## Survival by OLE Status

Rescue-ALS Study Participants Long-Term Observed Survival by OLE Entry Group



**Notes:** All randomized subjects including study withdrawals. Data censored for all subjects of 1-February-2022. Vital status and date of death captured for all subjects withdrawn from the study through Dec 2021. Lost-to-follow-up (n=1) censored as of the last date of last study contact. ENCALS median survival estimate from baseline characteristics.

**Acknowledgements:** We thank the ALS study patients and their families for their support and willingness to engage in clinical research. We thank the site investigators for their research excellence and dedication to patients. We thank FightMND of Australia for substantially funding the RESCUE-ALS trial.

